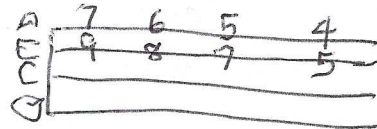
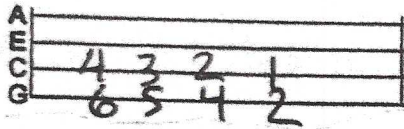


# Lil Rev Presents: Uke n' The Blues Class

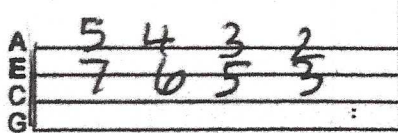
**The Country Blues Guitar Riff** is a classic Jug-Band Era guitar riff that can be heard a ton on Memphis Jug Band, Cannon's Jug Stompers and Jack Kelly's South Memphis Jug-Band among many other recordings by solo, early blues artists like: Frank Stokes, Sylvester Weaver, Blind Blake and Blind Boy Fuller.

The idea is to play this as an ending, after each verse.

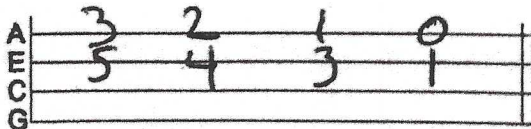
Here it is in the key of A: Try it out on *Corrina & Corrina* <sup>p. 4</sup> Nobody Knows You. <sup>p. 22</sup>



Here it is in the key of G: Try it out on *Adam and Eve*, *Trouble In Mind* and *Fishing Blues*.



Here it is in the key of F: Try it out on *St. Louis Blues*, *Jealous-Hearted Me* and *Rockpile Blues*.



Here are two variations to try in the key of C: Use this with *Deep Ellum Blues*

